

# LA CASTAFIORE CHANTAIT TROP FORT

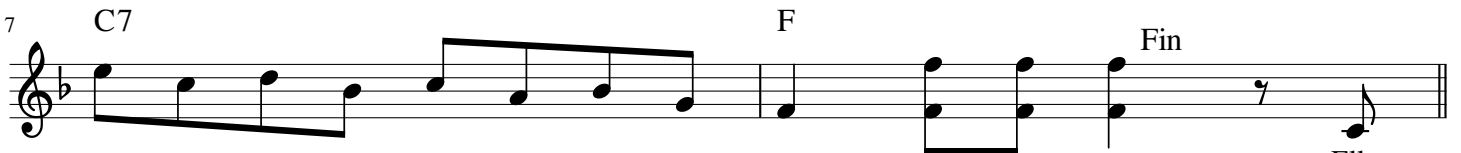
cha-cha

E.Blanchet - C.Depret - J.Richard - PY.Lombard

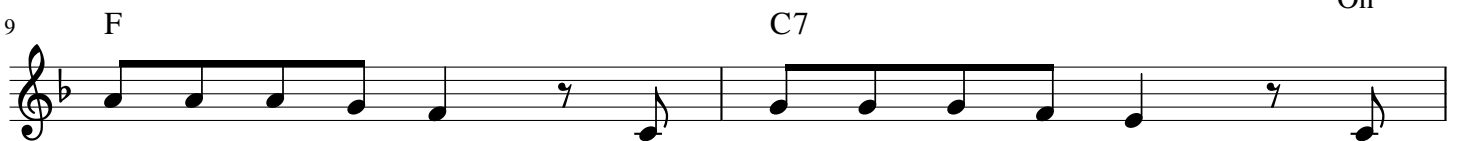
Intro

C7

F



Elle  
On



por tait un co llier des bagues à cha que doigts elle  
l'a vait sur no mmé ro ssi gnol mi la nais tou



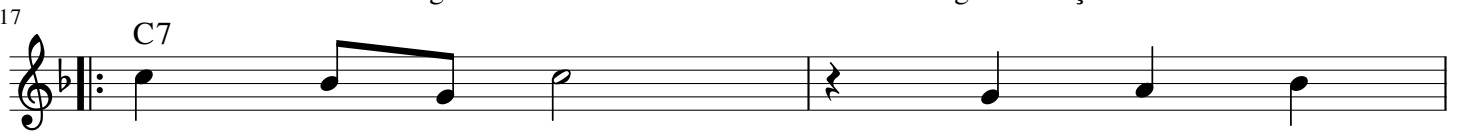
fai sait é cla ter du verre a vec sa voix Tout  
jours trop ma qui llé mais elle ça lui plai sait Elle



le monde co nnaî ssait cette di va d'I ta lie qui  
ri ait de se voir si belle dans son mi roir une



s'é tait fait vo ler ses bi joux par une pie Elle nous ca  
robe ex tra va gante elle é tait a ga çante



ssait les o reilles la cas ta  
la la la la

19 F

fio re Elle nous ca  
La la la

Detailed description: This musical staff is in treble clef with a key signature of one flat (B-flat). It begins with a chord symbol 'F'. The melody starts with a quarter note 'fio', followed by a half note 're' with a slur over it. There is a whole rest in the second measure, followed by a quarter rest and then three quarter notes: 'Elle', 'nous', and 'ca'. The lyrics 'La la la' are written below the notes in the third measure.

21 C7

ssait les o reilles  
la la la la la cas ta fiore chan tait trop

Detailed description: This musical staff is in treble clef with a key signature of one flat. It begins with a chord symbol 'C7'. The melody starts with a quarter note 'ssait', followed by eighth notes 'les' and 'o', and a quarter note 'reilles'. There is a whole rest in the second measure, followed by eighth notes 'la', 'cas', and 'ta', and quarter notes 'fiore', 'chan', and 'tait trop'.

23 F

fort Elle nous ca  
La la la

Detailed description: This musical staff is in treble clef with a key signature of one flat. It begins with a chord symbol 'F'. The melody starts with a quarter note 'fort', followed by a whole rest in the second measure. There is a quarter rest in the third measure, followed by quarter notes 'Elle', 'nous', and 'ca'. The lyrics 'La la la' are written below the notes in the fourth measure.

25 C7

ssait les o reilles  
la la la la la cas ta

Detailed description: This musical staff is in treble clef with a key signature of one flat. It begins with a chord symbol 'C7'. The melody starts with a quarter note 'ssait', followed by eighth notes 'les' and 'o', and a quarter note 'reilles'. There is a whole rest in the second measure, followed by quarter notes 'la', 'cas', and 'ta'.

27 F

fio re elle nous ca  
La la la

Detailed description: This musical staff is in treble clef with a key signature of one flat. It begins with a chord symbol 'F'. The melody starts with a quarter note 'fio', followed by a half note 're' with a slur over it. There is a whole rest in the second measure, followed by a quarter rest and then quarter notes 'elle', 'nous', and 'ca'. The lyrics 'La la la' are written below the notes in the fourth measure.

29 C7

ssait les o reilles  
la la la la la cas ta fiore chan tait trop

Detailed description: This musical staff is in treble clef with a key signature of one flat. It begins with a chord symbol 'C7'. The melody starts with a quarter note 'ssait', followed by eighth notes 'les' and 'o', and a quarter note 'reilles'. There is a whole rest in the second measure, followed by eighth notes 'la', 'cas', and 'ta', and quarter notes 'fiore', 'chan', and 'tait trop'.

31 F

fort La la la

Detailed description: This musical staff is in treble clef with a key signature of one flat. It begins with a chord symbol 'F'. The melody starts with a quarter note 'fort', followed by a whole rest in the second measure. There is a quarter rest in the third measure, followed by quarter notes 'La', 'la', and 'la'. The staff ends with a first ending bracket containing a repeat sign and a second ending bracket containing a double bar line and a repeat sign. A '2. F' chord symbol is placed above the second ending.